

2022年度 新潟青陵大学「学生の学修時間の実態や学習行動調査」結果(グラフ)

【実施時期】

2023年 2月 (19生)
2023年 4月 (20・21・22生)

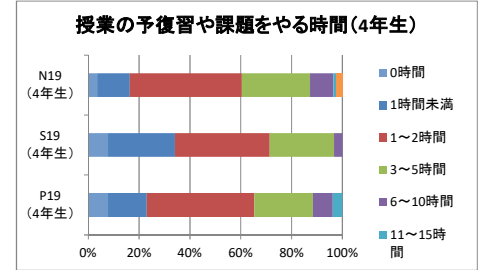
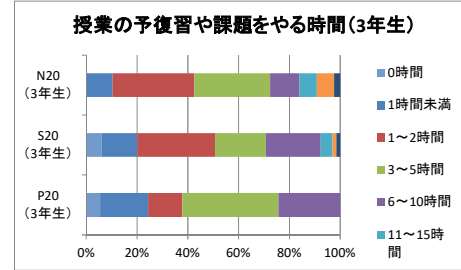
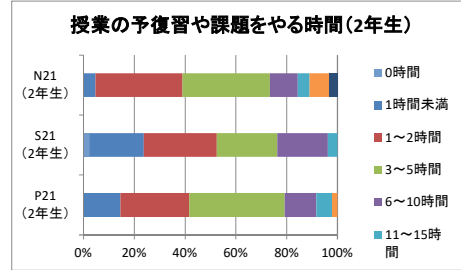
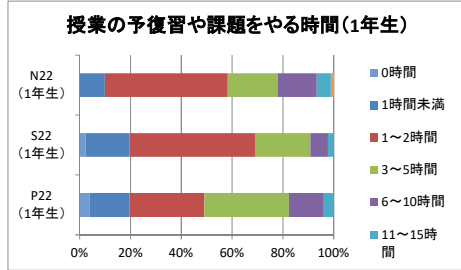
【有効回答数】

看護学科	328	(91	64	87	86)
社会福祉学科	323	(87	80	65	91)
臨床心理学科	188	(51	48	37	52)

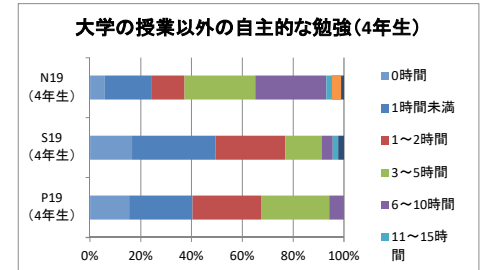
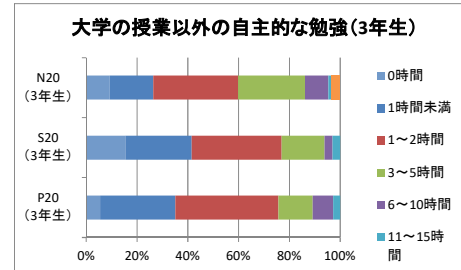
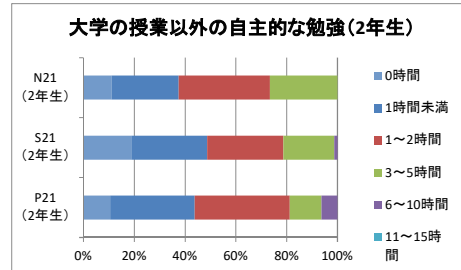
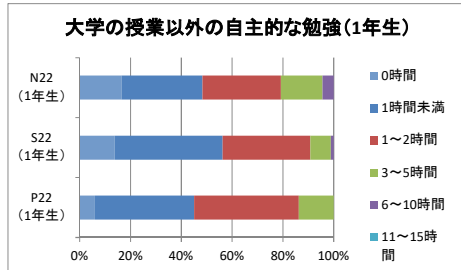
内訳: 22生 21生 20生 19生

1. ふだんの時間の過ごし方について、次の項目は1週間(月曜日～日曜日)で何時間くらいになりますか。今学期の平均的な1週間を振り返って、それぞれについてあてはまるもの1つをお選びください。

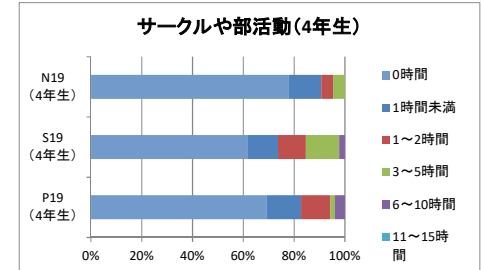
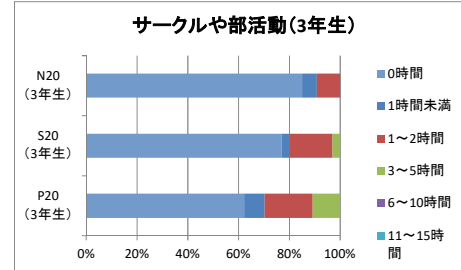
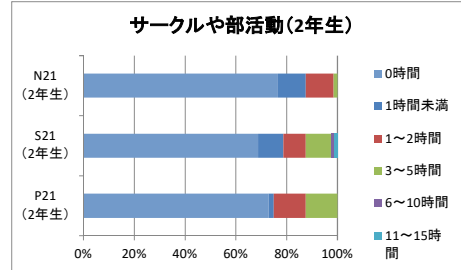
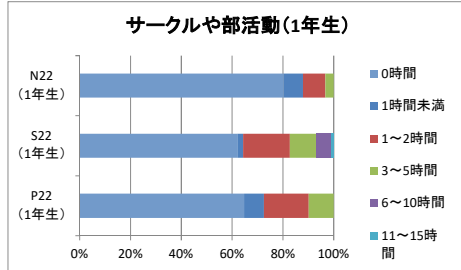
1-(1)



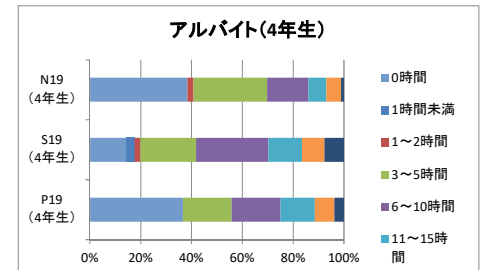
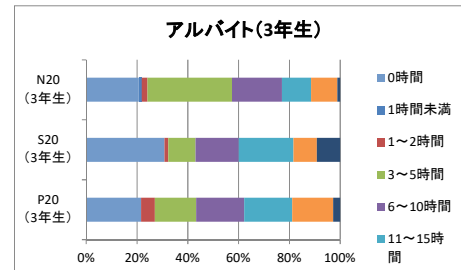
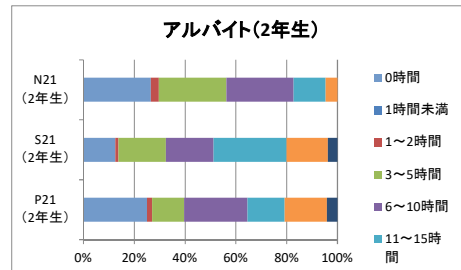
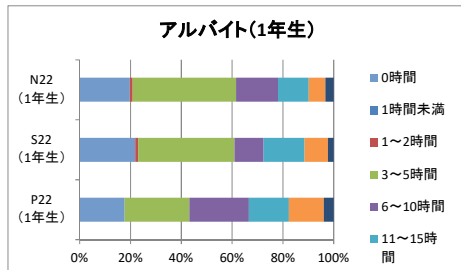
1-(2)



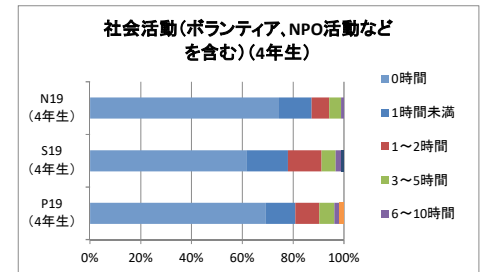
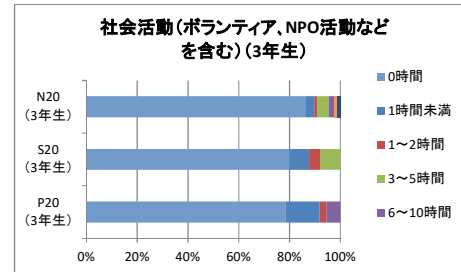
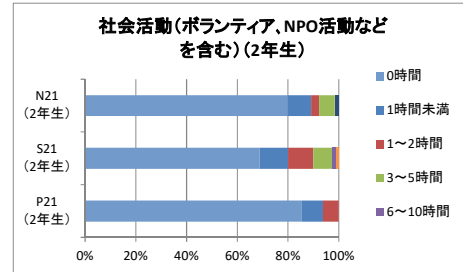
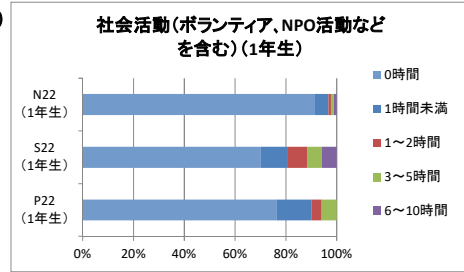
1-(3)



1-(4)

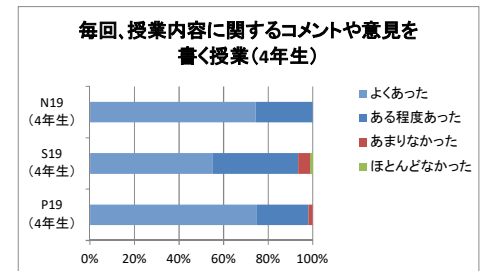
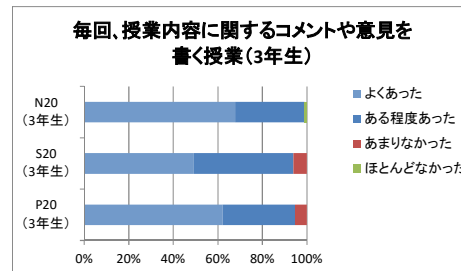
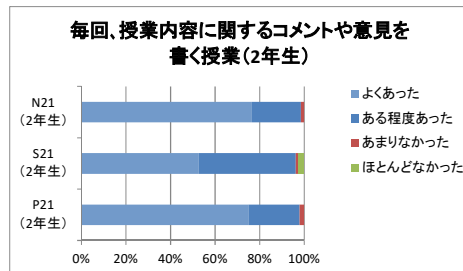
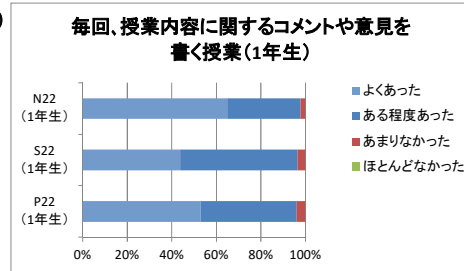


1-(5)

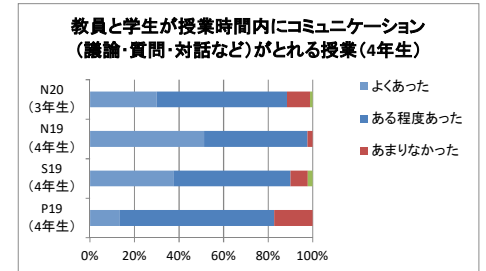
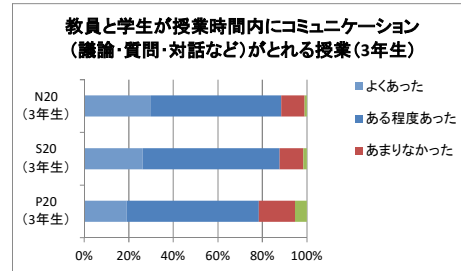
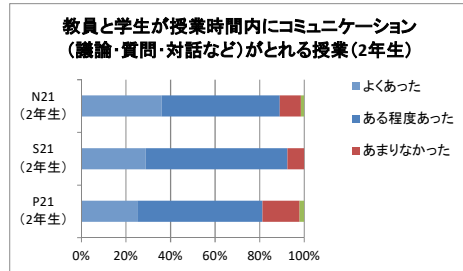
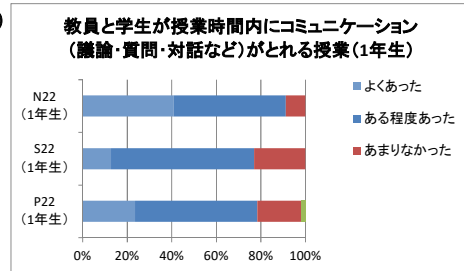


2. あなたはこれまで大学で、次のような授業を経験しましたか。それぞれについて、あてはまるもの1つをお選びください。

2-(1)



2-(2)



2-(3)

